

Fig. 6.4 Net for the incomplete single cycle square flexagon.

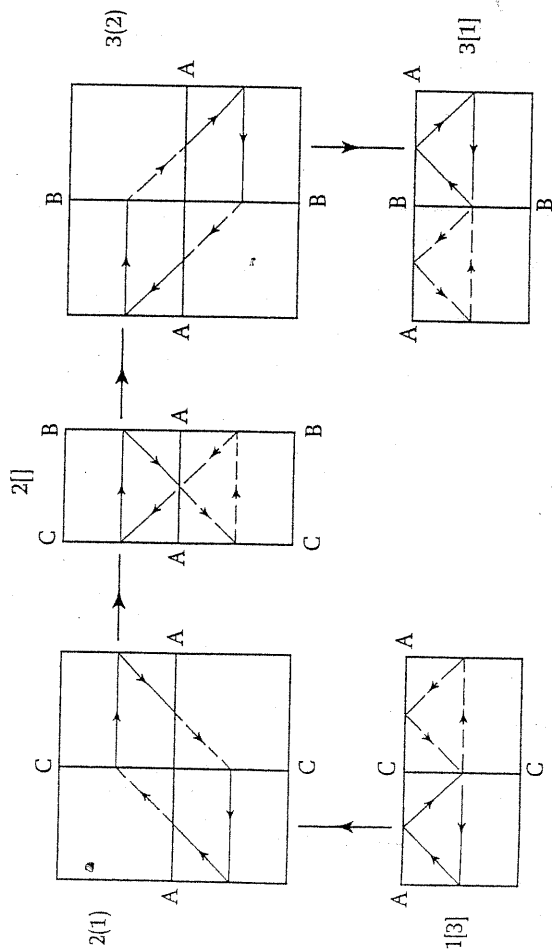


Fig. 6.5 Full map of the incomplete single cycle square flexagon.

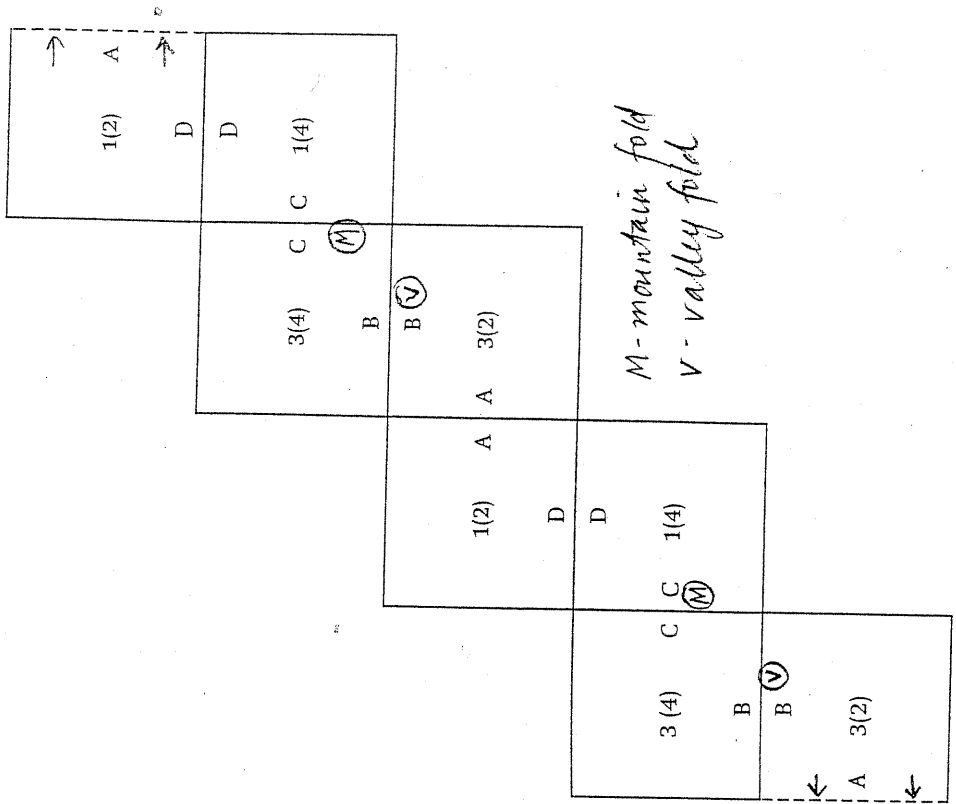


Fig. 6.1 Net for the regular single cycle square flexagon.

vertices on the midpoints of a circumscribing square. The simplified map, Tuckerman diagram, and the intermediate position map are the same as those for the irregular single cycle square flexagon (Figs. 3.11, 3.12 and 3.13). Information that differentiates between the two types of square flexagon has been lost in the simplification.

A regular single cycle flexagon may be defined as a single cycle flexagon whose flexagon figure is a regular polygon with the same number of sides as the circumscribing polygon.

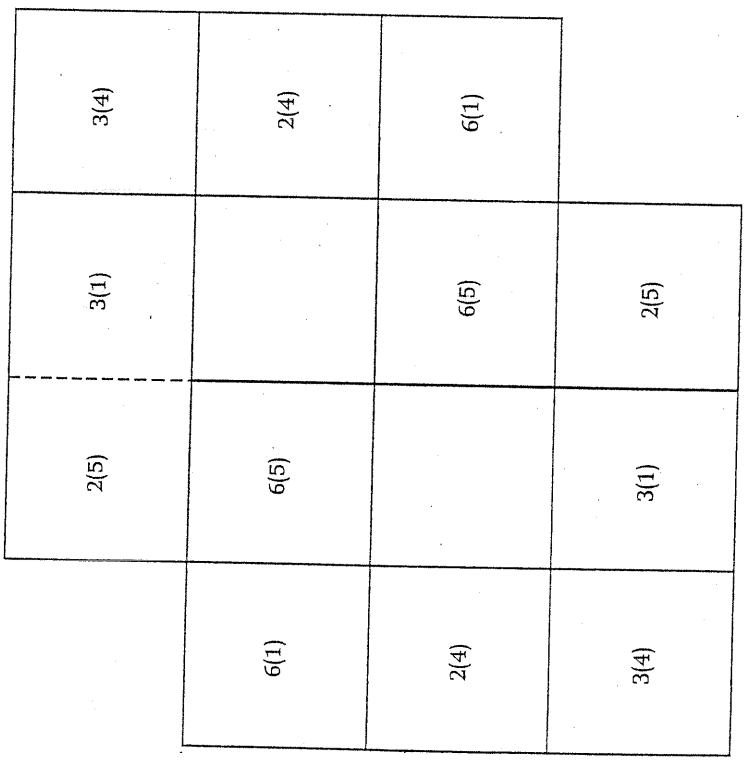
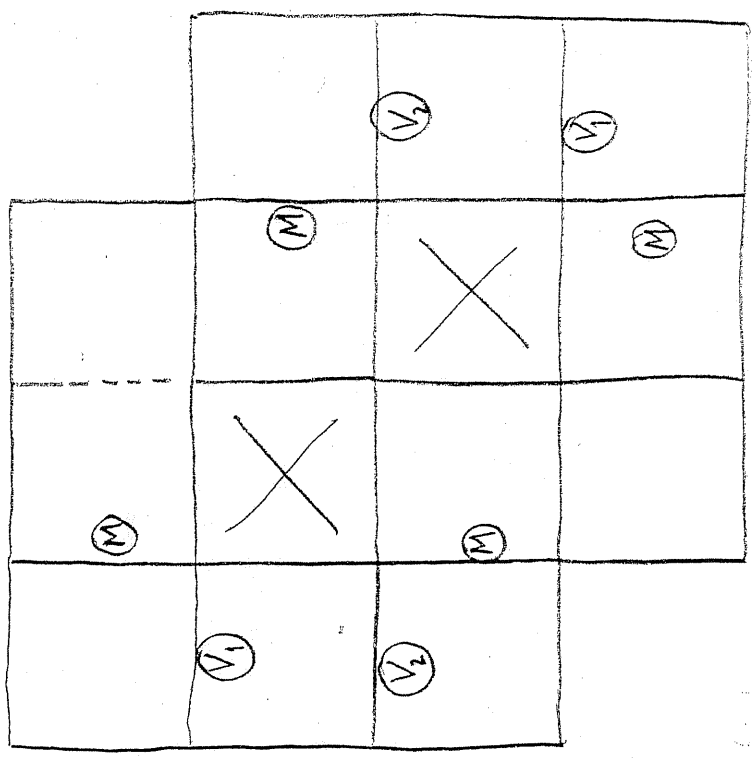


Fig. 6.14 Net for the square flexagon with one regular and one irregular cycle, main position link. Cut along the dashed line and cut out the unnumbered squares.



- 1) Fold mountain folds first.
- 2) Fold valley folds in order: V_1 then V_2 .
- 3) Tape together

Fig 6.14
p. 64

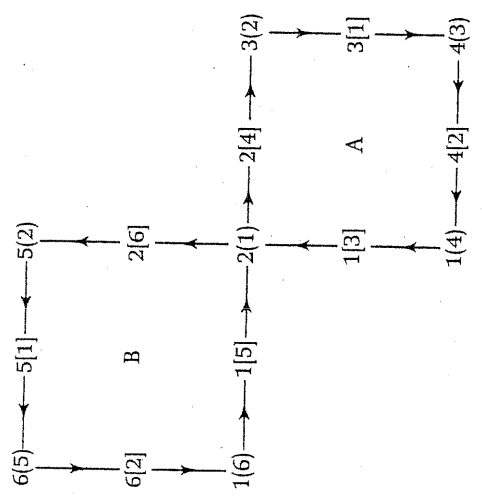


Fig. 6.10 Simplified map of the square flexagon with two regular cycles, main position link.

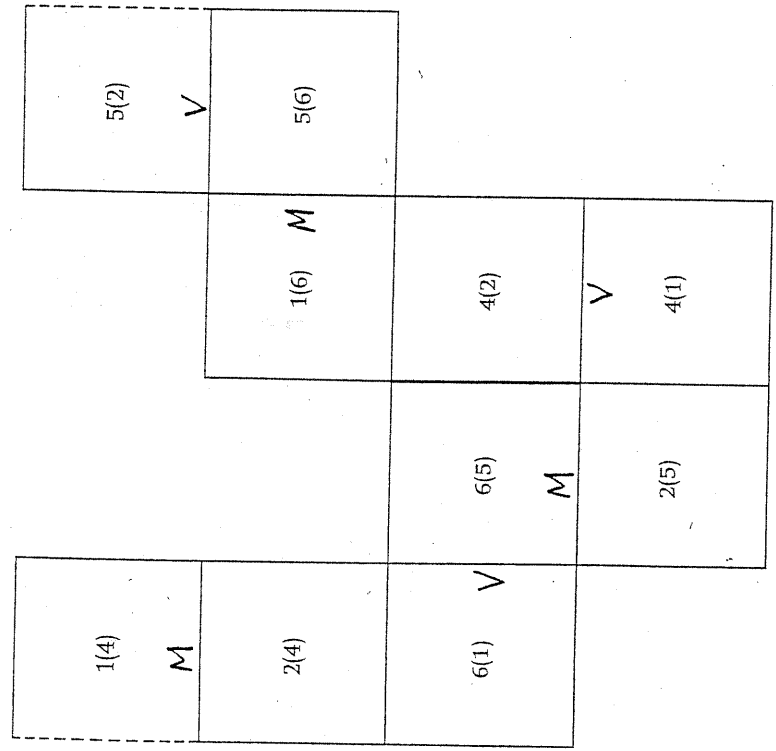
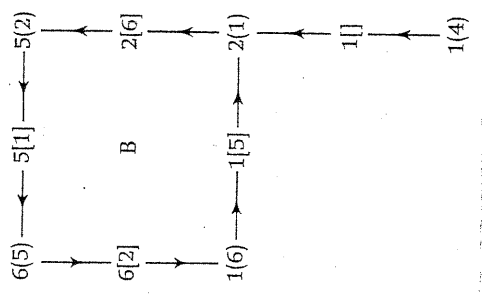


Fig. 6.15 Net for the square flexagon with one regular and one incomplete cycle, main position link. Cut along heavy line.



A

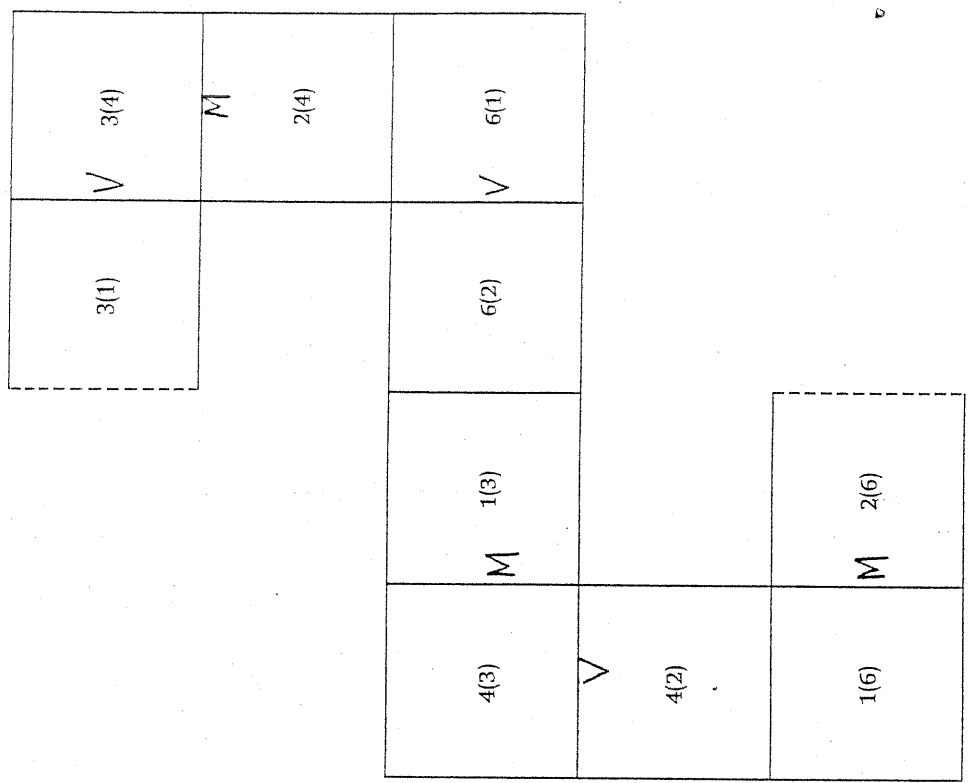


Fig. 6.17 Net for the square flexagon with one irregular and one incomplete cycle, main position link.

B

